

# February Network Call

February 1, 2018

**LGBT  
HEALTH**

**California LGBT Health &  
Human Services Network**

# Agenda

- ▶ Introductions
- ▶ Prop 64 - Adult Use of Marijuana Act
- ▶ State Policy Updates
- ▶ Federal Policy Update
- ▶ #Out4Mental Health
- ▶ Announcements
- ▶ Questions



## California LGBT Health & Human Services Network

- ▶ Statewide coalition working collectively to advocate for state level policies and resources that will advance LGBT health.
  - ▶ Over 60 organizations participate: community centers, clinics, researchers, advocates
- ▶ Provide coordinated leadership about LGBT health policy in a proactive, responsive manner that promotes health and wellness as part of the movement for LGBT equality.
- ▶ **The Network seeks to:**
  - ▶ Engage LGBTQ organizations in state-level policy decisions
  - ▶ Advocate for policies advancing the health of LGBT communities
  - ▶ Expand coverage and improve access to quality health care
  - ▶ Strengthen programs and build capacity for member organizations
  - ▶ Increase funding to LGBT health and human services organizations
  - ▶ Raise awareness among state policymakers about the needs of LGBTQ communities

# Introductions

- ▶ Name
- ▶ Organization
- ▶ Geographic Service Area
- ▶ Primary Programs/Services

# Our Guest: Jim Keddy, Youth Forward



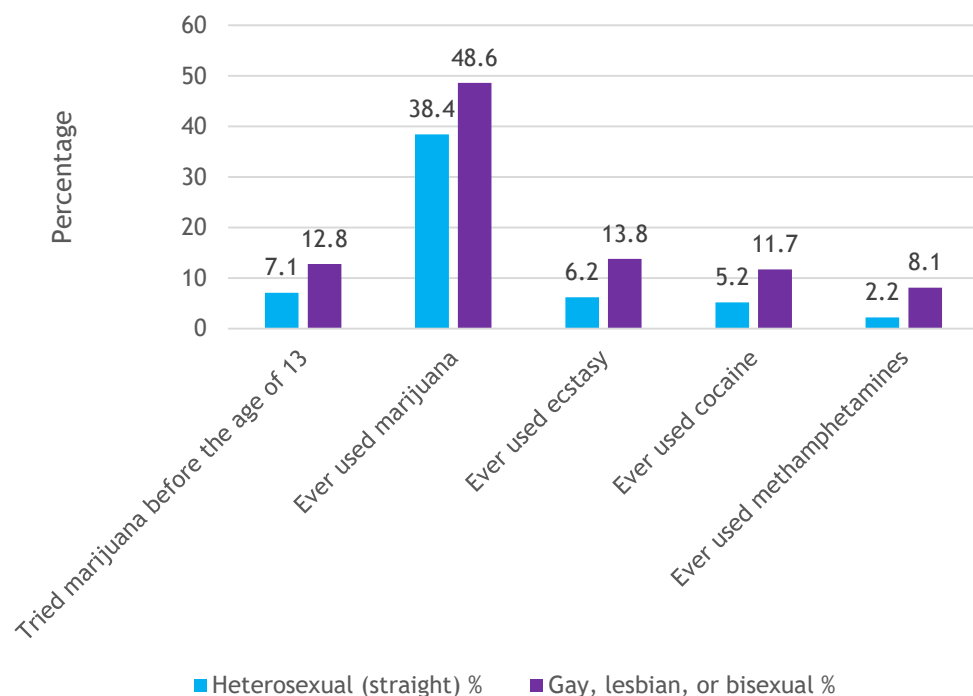
Jim Keddy is the executive director of Youth Forward and a consultant to social change organizations. For thirty years Jim has served as a leader in social change efforts in California. He is the former director of PICO California, a statewide association of community organizing efforts, and served as a vice president at The California Endowment, one of the state's largest charitable foundations. While at The Endowment, he played a primary role in developing the foundation's youth organizing strategy. He began his work in promoting racial and social justice as a high school and college activist and entered the community organizing field in his early 20's. He has been a member of several non-profit boards including the boards of The California Endowment, Public Health Advocates and the California Budget and Policy Center. He currently serves on the board of Families Now, a child welfare advocacy organization. He is married to Gina Martinez-Keddy and is the proud father of 2 adult children. He is a worm rancher and a guitar player.

# Prop 64: Adult Use of Marijuana Act

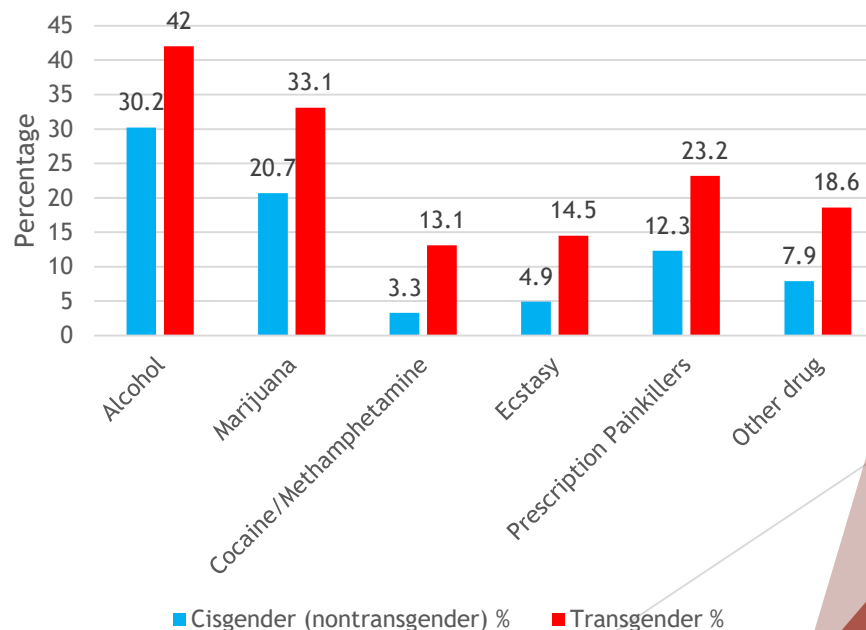
- ▶ **2016** - Prop 64 passed in California - decriminalizing recreational marijuana and personal cultivation.
- ▶ **Reduces the criminal penalties** for most marijuana violations to infractions or misdemeanors and permits persons currently serving a sentence to petition for a recall or dismissal of sentence;
- ▶ **Establishes the California Marijuana Tax Fund** for all taxes collected, and after funds are distributed for specified purposes, designates a percentage of the remaining funds to be deposited into the following accounts:
  - ▶ a. **Youth Education, Prevention, Early Intervention and Treatment Account (60%);**
  - ▶ b. **Environmental Restoration and Protection Account (20%);**
  - ▶ c. **State and Local Government Law Enforcement Account (20%)**

# Substance Use among LGBTQ Youth in California

Youth Substance Use by Sexual Orientation  
(YRBS 2015, California)



Lifetime Substance Use Among Transgender and Cisgender Youth  
(California Health Kids Survey, 2013-2015)



## Factors contributing to high rates of substance use

- ▶ Bullying and harassment
- ▶ Family conflict and rejection
- ▶ Minority stress
- ▶ Childhood abuse
- ▶ Gender stereotypes
- ▶ Peer influence

## Strategies to address LGBTQ youth substance use

- ▶ Encourage respect for all students
- ▶ Identify safe spaces
- ▶ Promote school connectedness and safe,
- ▶ Ensure that health classes and educational materials include information that is relevant to LGBTQ students
- ▶ Implement professional development opportunities
- ▶ Promote parent engagement
- ▶ Make it easier for students to have access to community-based partners



# Background: State Level

- ▶ “Sixty percent (60%) shall be deposited in the Youth Education, Prevention, Early Intervention and Treatment Account, and disbursed by the Controller to the Department of Health Care Services for programs for youth that are designed to educate about and to prevent substance use disorders and to prevent harm from substance use.”
- ▶ The Department of Health Care services shall enter into inter-agency agreements with the Department of Public Health and the Department of Education to implement and administer these programs.

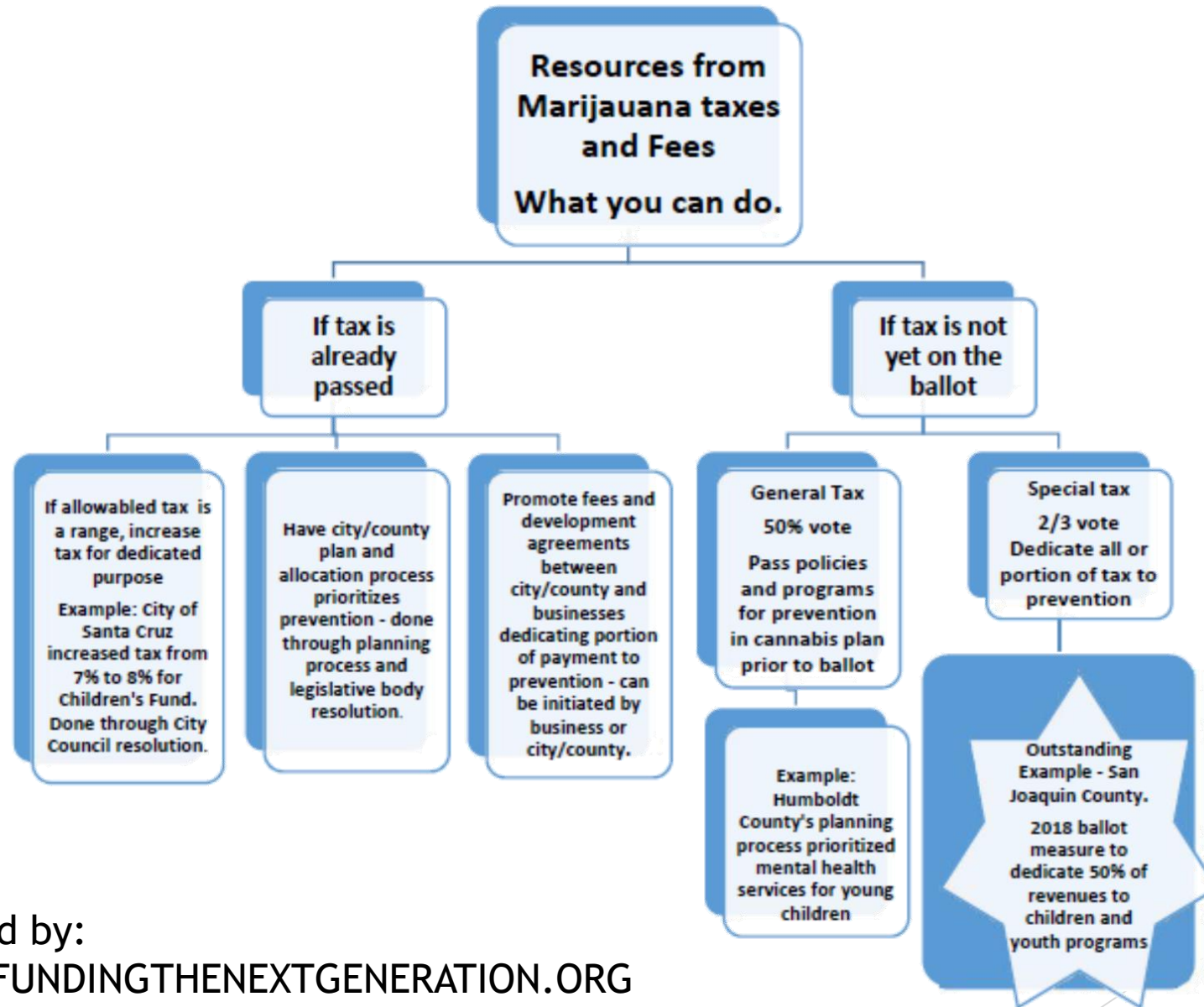


# Background: Local Level

- ▶ Cities and counties now have authority to regulate and tax marijuana businesses.
- ▶ Sales, cultivation, testing, transportation, distribution, and manufacturing of marijuana can be taxed at the local level if approved by voters.
- ▶ Investments of tax revenue in health, youth programs and prevention are clearly aligned with voter intentions.



# Options for dedicating marijuana tax and revenue funds to social justice and prevention



# Prop 64: Guiding Principles

- ▶ Programs should build from a positive youth development model that is developmentally appropriate, culturally and linguistically competent, takes a trauma-informed and harm reduction approach, and honors youth choice and voice. Any programs funded serve youth in accordance with their gender identity and must meet a basic level of LGBTQ cultural competency.
- ▶ Funding should prioritize communities that were disproportionately impacted by the war on drugs, including communities of color and LGBTQ communities.
- ▶ Practices should be built around best available evidence while allowing for innovation and adaptation to local needs and circumstances and the needs of special populations, including LGBTQ youth, youth experiencing homeless, and juvenile justice systems-involved youth.

# Prop 64: Opportunities to Get Involved

- ▶ Join the Prop 64 Stakeholder Workgroup: email [awallner@health-access.org](mailto:awallner@health-access.org)
- ▶ Join/attend the DHCS Substance Use Disorder Youth Advisory Group:  
<http://www.dhcs.ca.gov/provgovpart/Pages/Youth-Advisory-Group.aspx>
- ▶ Join a local coalition working on these issues

# Resources for Advocating for LGBTQ health priorities

- ▶ Funding the Next Generation: Resources to Create a Local Youth Fund  
<http://www.fundingthenextgeneration.org/taxes-revenue-options-local-children-youth-fund/#chapter3.1>
- ▶ Prop 64 Stakeholder Youth Committee:  
<https://drive.google.com/drive/folders/0B6wkkoAEGF42WDMxYXpjZXlEWEE>
- ▶ Getting It Right From the Start:  
<https://www.gettingitrightfromthestart.org/california-local-regulation>
- ▶ Human Rights Campaign: Preventing Substance Use Among LGBTQ Teens  
<https://assets2.hrc.org/files/assets/resources/YouthSubstanceAbuse-IssueBrief.pdf>
- ▶ Or email Amanda Wallner at [awallner@health-access.org](mailto:awallner@health-access.org)



# State Policy Updates

- ▶ Governor's Budget Released, January 10
  - ▶ <http://www.ebudget.ca.gov/home.php>
- ▶ California Bill Introduction Deadline, February 16
- ▶ Covered California: Open Enrollment closed January 31



# Federal Policy Updates

- ▶ License to Discriminate Rule, or “Conscience and Religious Freedom Division”
- ▶ Tax Bill
- ▶ Federal Budget
  - ▶ DACA
  - ▶ CHIP
  - ▶ Health Center Funding
- ▶ ACA and Medicaid



# #Out4MentalHealth

- ▶ Local Liaisons Wanted!
- ▶ Contribute a blog post
- ▶ Share information using our Social Media Toolkit

# CA LGBTQ Mental Health Think Tank

## Introductory Think Tank Call

Wednesday, February 7 at 2pm

Call in Number: 866-906-7447

Conference Code: 4914724#

Web Conference [Link](#)

- ▶ *An informational call for anyone who is interested in joining the CA LGBTQ Mental Health Think Tank. Through quarterly phone calls, we want to learn and share information about what the barriers are to accessing quality, affordable, and affirming care in your communities. Together, we will identify potential solutions, including how to fund LGBTQ mental health programs, making sure counties and/or providers are complying with state laws, and what state or local policy changes are needed.*



# Announcements

The background features a series of overlapping, semi-transparent geometric shapes in various shades of red and brown. These shapes are primarily located on the right side of the slide, creating a modern, layered effect. The overall aesthetic is clean and professional.

# Questions?

# Contact Information

- ▶ **Mandy Taylor, MSW**
  - ▶ Outreach and Advocacy Coordinator
  - ▶ [mtaylor@health-access.org](mailto:mtaylor@health-access.org)
  
- ▶ **Amanda Wallner, MPP**
  - ▶ Network Director
  - ▶ [awallner@health-access.org](mailto:awallner@health-access.org)
  
- ▶ [www.californialgbthealth.org](http://www.californialgbthealth.org)